

The logo symbol consists of two thick, dark blue curved lines. The top line starts on the left, curves upwards and then downwards to the right. The bottom line starts on the left, curves downwards and then upwards to the right. The two lines are positioned such that they appear to be part of a larger, continuous shape, possibly representing a stylized letter or a symbol related to the brand.

# atmen

Flore de Durfort - Dominik Peller  
07.05.2024

# “Certified Green” will distinguish winners from losers in the Power-2-X space.

Unless molecules are certified green, producers won't be able to justify **price premiums**.

Unless supply chains are compliant with reg standards, these won't be eligible for **subsidies**. *EU H2 bank, Ccfd schemes*

Unless molecules are attached to their exact and verified embedded carbon footprint, these won't be **tradeable internationally**.

HELP!



# Green certification today

## The DIY path

- Complex & tedious
- high maintenance due to fast-evolving landscape
- Increasingly tech-intensive

## The Big4 path

- Extremely costly, including long-term for maintenance
- Knowledge loss to third party





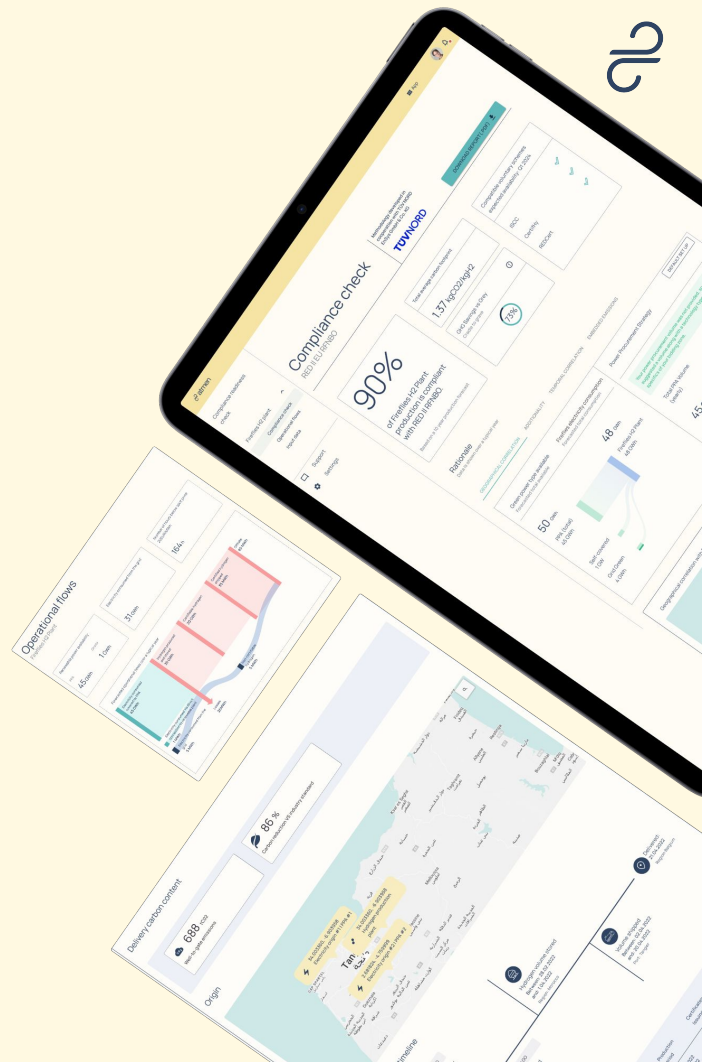
# The ideal path

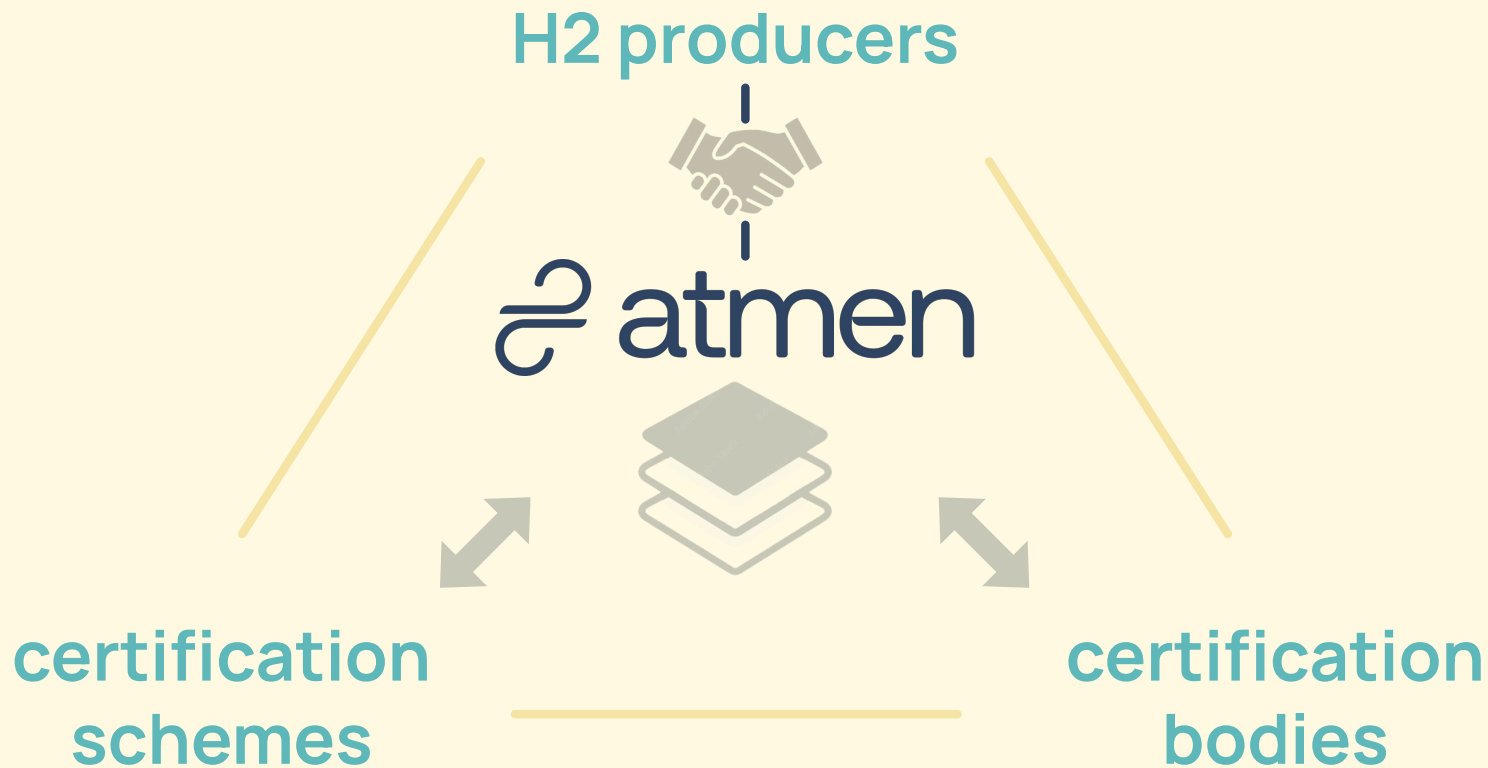
- You are **confident** that your certification workflows are always on top of regulatory change.
- Your supply chain and operations are **optimized** FOR sustainability before they even exist.
- Compliance and certification don't rely on tedious work but are seamlessly **embedded** in your operations.

# The solution

Intelligent green certification platform saving you up to 90% time in the process.

Atmen is the SaaS technology layer sitting on top of hydrogen and e-fuels supply chains, taking care of low-carbon certification - at scale and across borders.





Atmen tech layer: Eliminates friction & provides scalability



Feasibility Study



Compliance check



Final investment decision



Commercial Operation Date



Certificate Portfolio Management



Digital Product passports



Audits & reports



# Compliance Check

Pre-operational stage

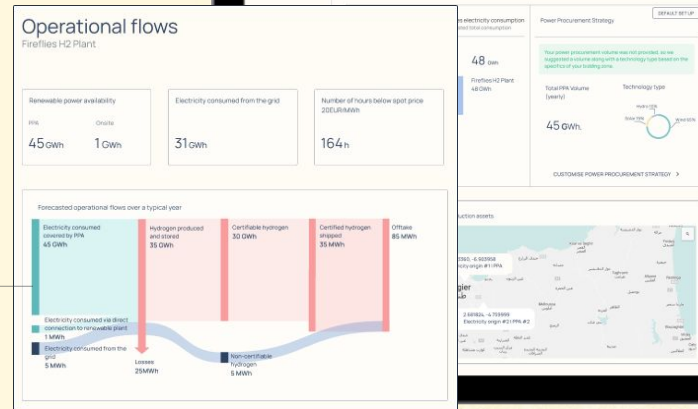
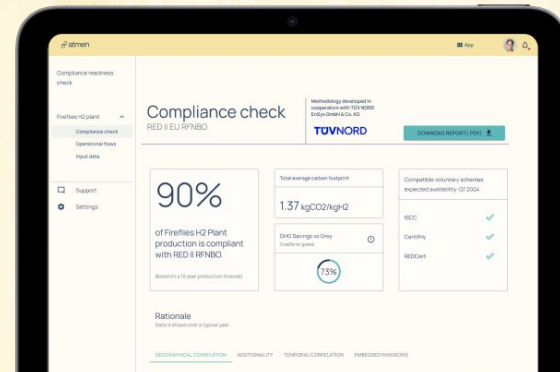
## Compliance readiness check

Methodology developed in cooperation  
with TÜV NORD EnSys GmbH & Co. KG



Feed in your plant engineering, supply chain data and energy inputs to:

- simulate energy flows and carbon intensity
- validate eligibility for certification schemes
- boost your certification readiness
- increase offtakers trust and bankability

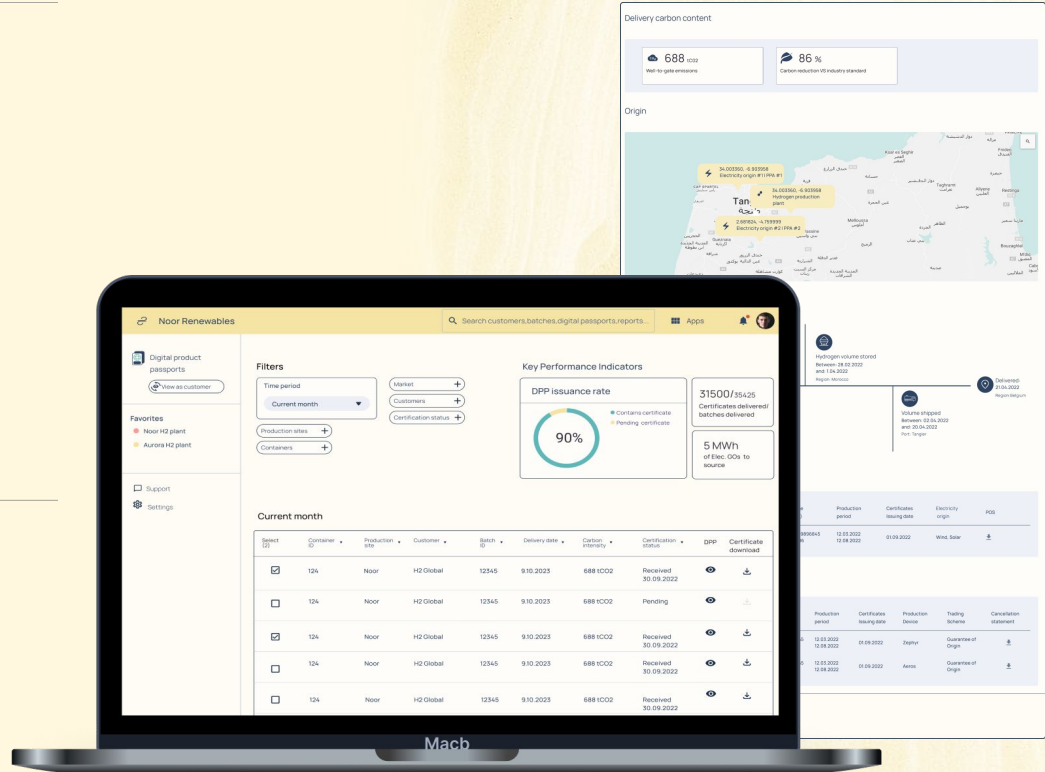


# Digital Product Passports

Post-COD/Operational stage

Craft compelling data-driven sustainability stories thanks to Digital Product Passports

DPPs carry and validate the sustainability attributes of each batch along the value chain. They turn complex, scattered operational data into unified audit trails and understandable sustainability stories. DPPs act as the enabling layer to manage certificates issuance, transfer and cancellation - at scale.

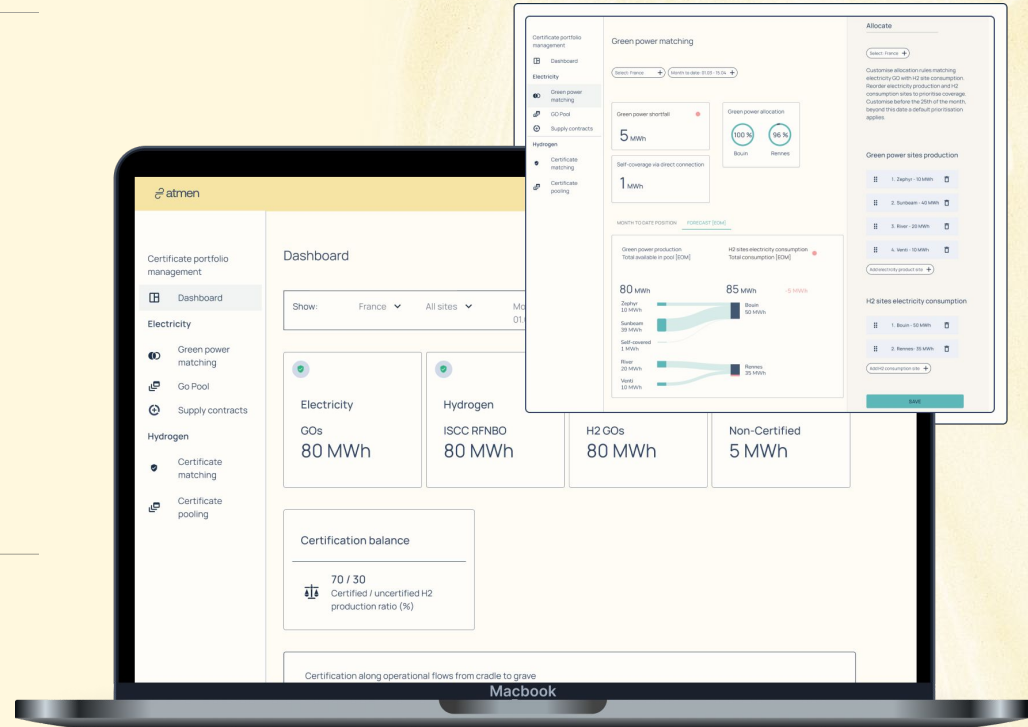


# Certificate Portfolio Management

Post-COD/Operational stage

Save time and money with automated certification

- **Easily and continuously** trace sustainability attributes, maintain your mass balances
- **Issue Sustainability Declarations** for your green production thanks to a powerful technology layer designed to streamline and scale certification processes.
- **Ace audits.** Save 90% time and effort as compared to traditional, manual alternatives and achieve cost efficient compliance.



# Value propositions (in short)

---



Save 90% time.

---



Gain immediate trust.

---



Unlock green premiums.

---



Manage risks, efficiently.

---



We partner with...



We come from...



# Founders team

---



Flore de Durfort  
Chief Executive Officer

Last: Head of data monetization  
& incubation @E.ON

Energy markets  
& regulation



Data  
Monetisation



Quentin Cangelosi  
Chief Technology Officer

Last: Senior Data Scientist  
@E.ON

Data  
Science



Full Stack  
Development



Erika Degoute  
Chief Product Officer

Last: Senior Product  
Designer @E.ON

Product  
Design



UX/UI  
Design

# Where we stand

## Product Launch

First 10!

## Go-to-market

TUV Nord, BCG,  
Energy & Regulation  
Partners

## Fundraising

1.3M€ in Q2'23





# Our Asks to you

Interested?

Let's talk!

Co-dev partners

CO2 brick - SAF, Methanol  
Green Steel

Go-to-market  
partnerships

Associations  
ELY manufacturers

Mentoring





# Thank you.

Book a demo



Flore de Durfort | CEO



[florededurfort@atmen.co](mailto:florededurfort@atmen.co)



+49 152 09254320



[/florededurfort](#)

